

Steffany-Vallenilla

Boy / 1.74 Göğüs / 86 Bel / 62 Kalça / 94 Ayakkabı / 39 Göz / Yeşil Saç / Kahverengi












































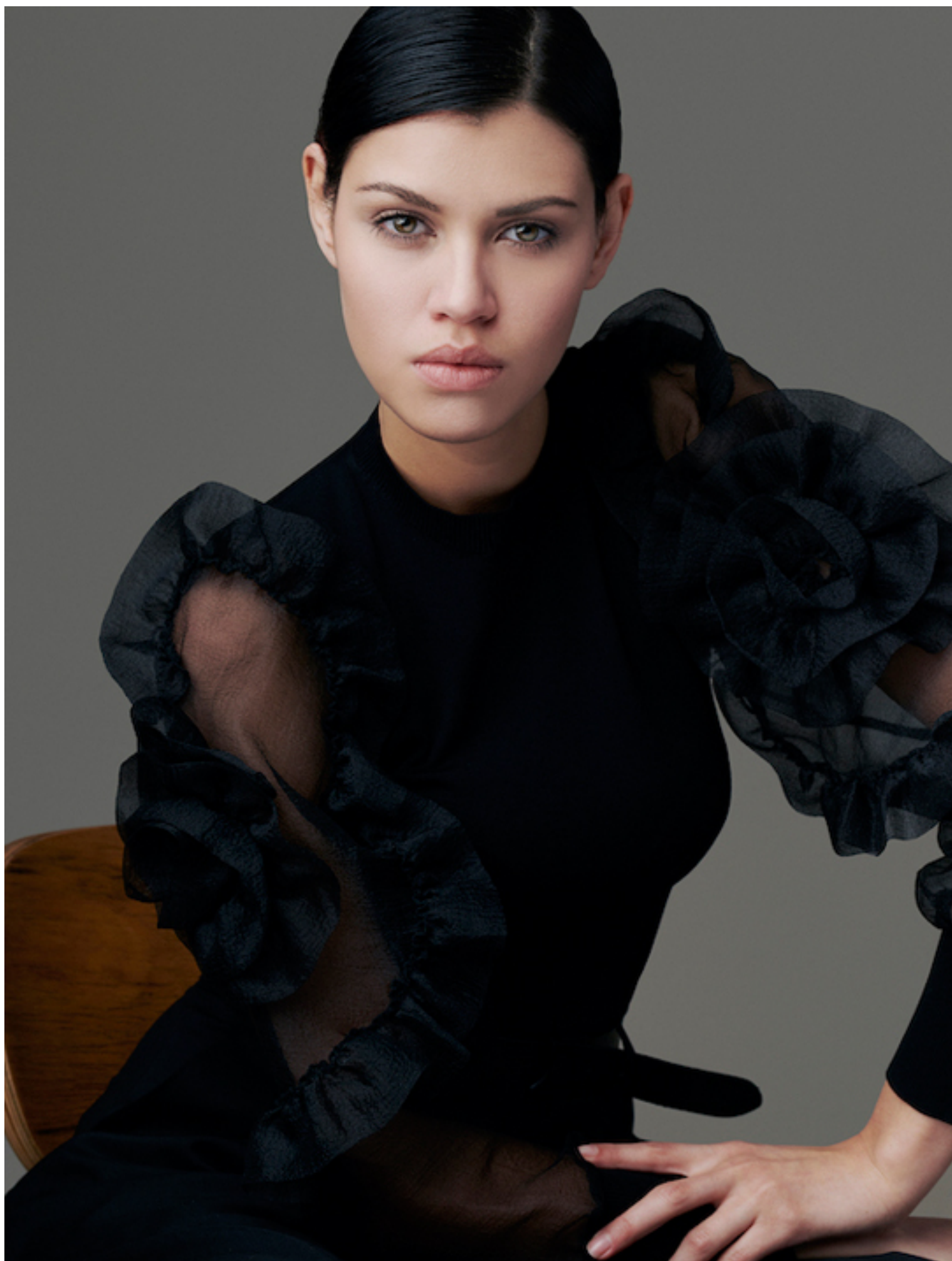




A close-up portrait of a woman with fair skin, green eyes, and dark hair. She is looking slightly to the left. Her skin has a natural-looking glow, and her lips are coated in a vibrant red lipstick. The lighting is soft and even, highlighting the texture of her skin and the color of her eyes and lips.

an Red
with
Nebula, Elevated Glow
ly, Lip Colour























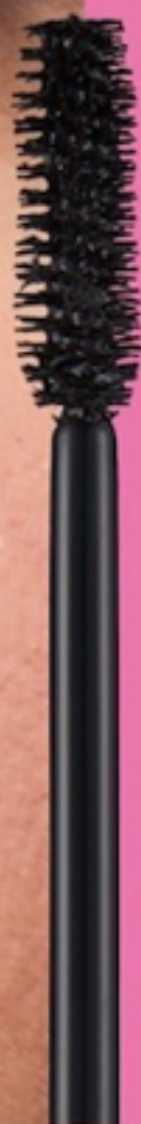






is

THAT
SOMETHING
THAT LIFTS
YOU UP







GET THE LOOK



PAGE LEFT
SKIN WILSON SKIN FOOD, CC FOUNDATION
YOUR SKIN BUT BETTER CC+ CREAM BY IT
COSMETICS, BHS BHS UNDER EYE
CONCEALER BY IT COSMETICS EYES PRISM
EYE SHADOW PALETTE BY
ANASTASIA BEVERLY HILLS, BROW DEFINER
IN MEDIUM BROWN CHEEKS BLUSH TRO
PEACHY SLOW, SUN DIPPED SLOW KIT BY
ANASTASIA BEVERLY HILLS LIPS - STONED
ROSE K.I.S.S.I.N.G. LIPS LIPSTICK BY CHARLOTTE
TILBURN

PAGE RIGHT, LEFT IMAGE
SKIN WILSON SKIN FOOD, CC FOUNDATION
YOUR SKIN BUT BETTER CC+ CREAM BY IT
COSMETICS, BHS BHS UNDER EYE
CONCEALER BY IT COSMETICS EYES PRISM
EYE SHADOW PALETTE BY ANASTASIA
BEVERLY HILLS, BROW DEFINER IN MEDIUM
BROWN CHEEKS BLUSH TRO PEACHY
SLOW, SUN DIPPED SLOW KIT BY ANASTASIA
BEVERLY HILLS LIPS - STONED
ROSE K.I.S.S.I.N.G. LIPS LIPSTICK BY CHARLOTTE
TILBURN POWDER IT COSMETICS EYE BHS
PORES

PAGE RIGHT, RIGHT IMAGE
SKIN WILSON SKIN FOOD GOLD POWDER BY
MAKE UP FOREVER FLASH PALETTE













