

# Lina-Pchenasheva

Boy / 1.77 Göğüs / 83 Bel / 61 Kalça / 92 Ayakkabı / 39 Göz / Ela Saç / Siyah



























*This Page:*

*Suit - Katerina Myachina*

*Belt Bag - Gucci*

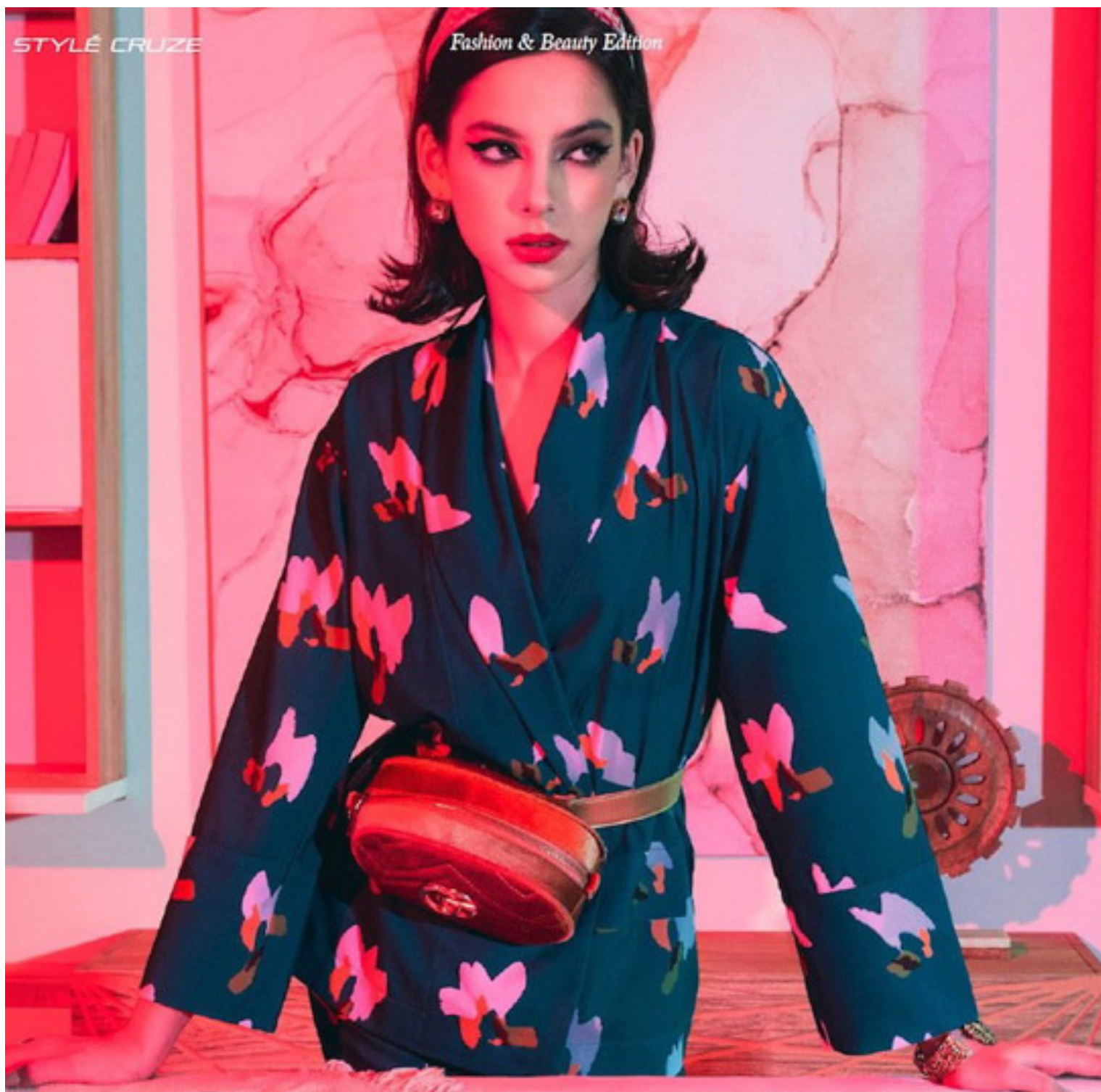
*Scarf - no name*





STYLE CRUZE

Fashion & Beauty Edition



# HOUSEWIFE

Photographer/Creative Director: ANNA KRIVENKOFF  
Wardrobe Stylist: ELENA KIRASIROVA  
Makeup Artist/Hair Stylist: ANASTASIA FORTUNA  
Model: ALINA PCHENASHOVA @Aquarelle Models  
Retoucher: JULIA KOZLOVA







hbxwm 1 ч.

**New Arrivals: MSGM SS20 Collection**















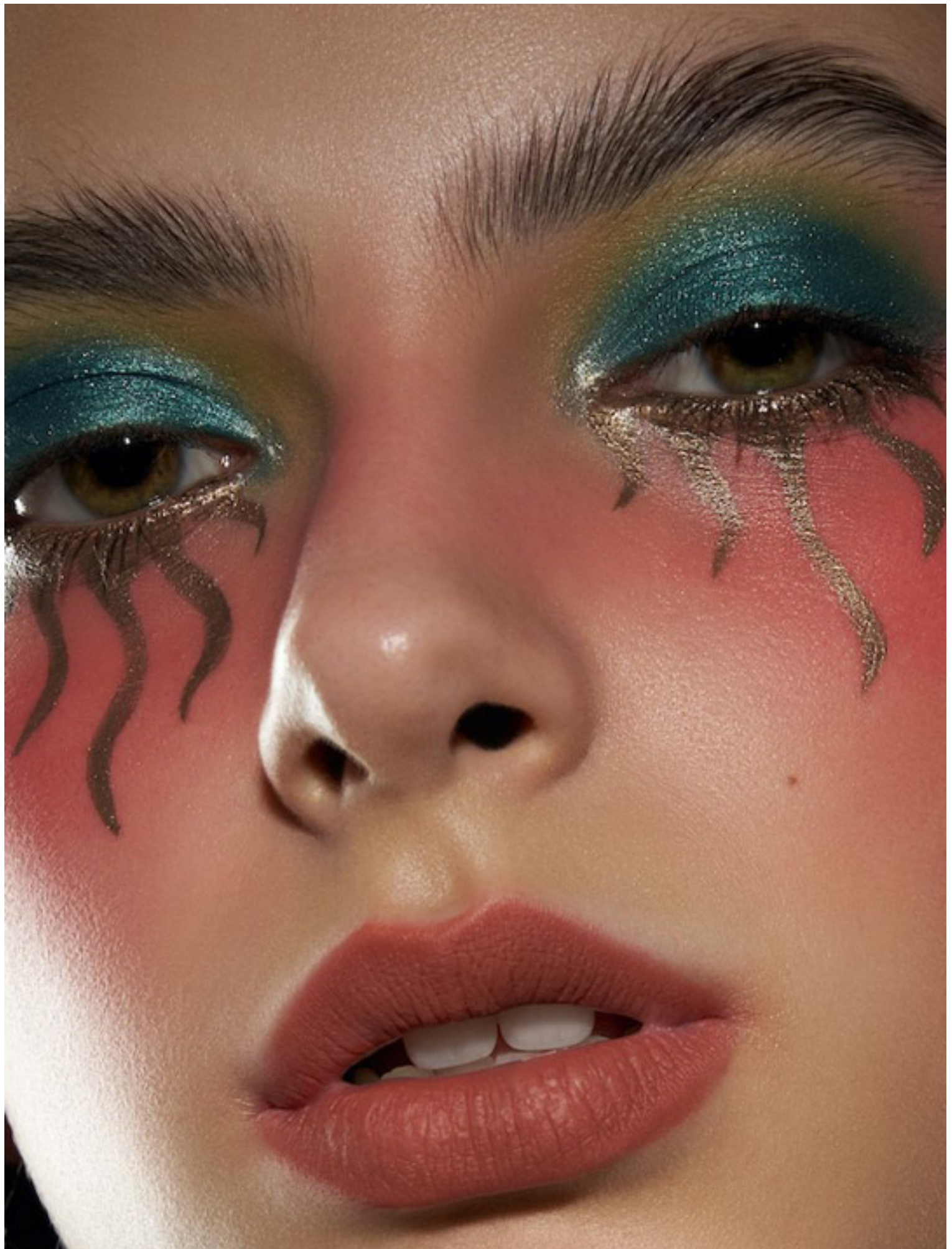






























This Page:

Dress - River Island

Jacket - Elena Kireyeva

Clutch - Look









XAN



#IzzueLiveItReal

1975	LIVE IT REAL	SINCE 1988
NO MORE MUSTHARD IN LIFE	NO MORE MUSTHARD IN LIFE	





#IzzueLiveltReal

NO MORE WASTAGE IN LIFE  
NO MORE WASTAGE IN LIFE  
NO MORE WASTAGE IN LIFE

















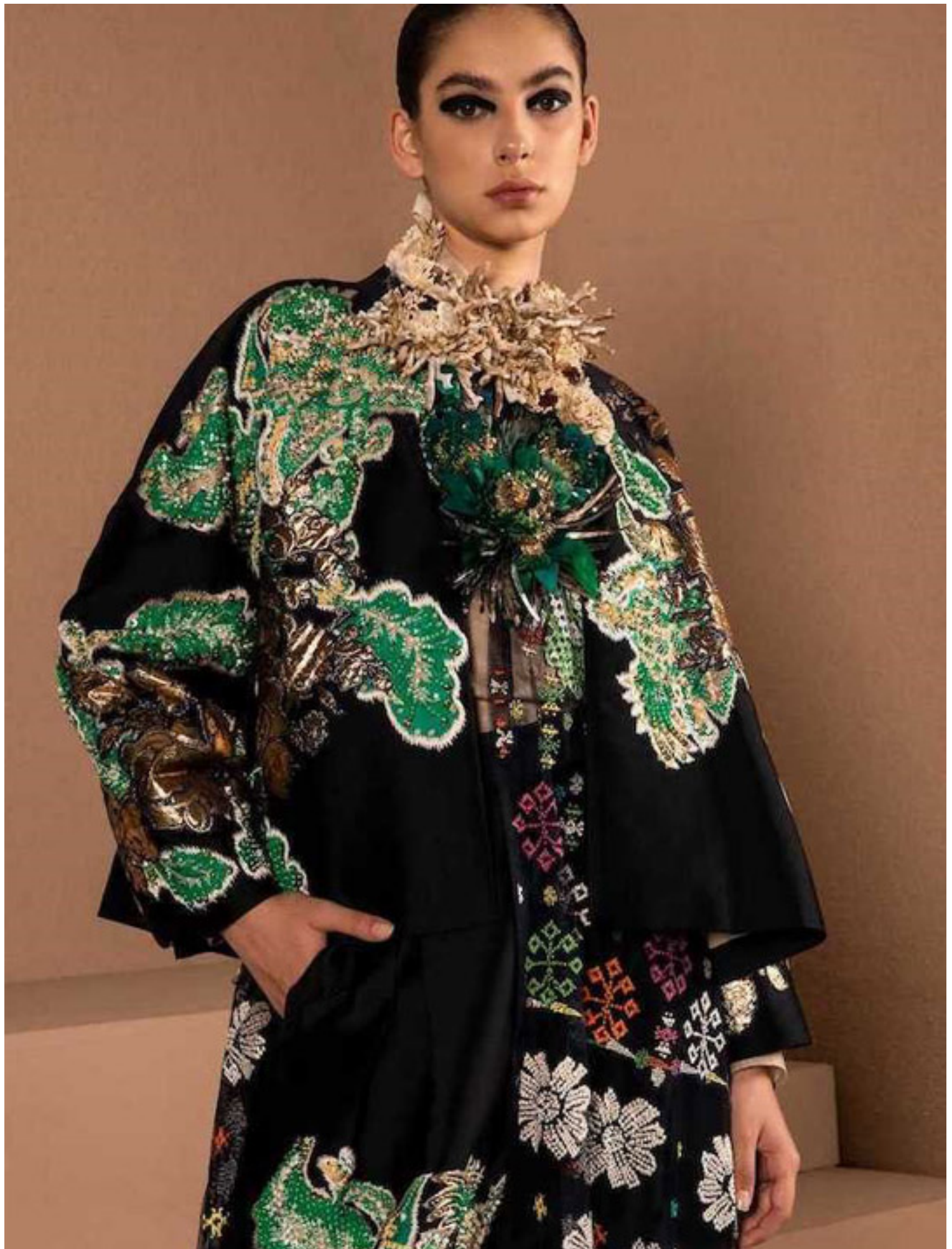




























**New in**

**8月26日 秋季新品到店 ▶**

**VIP购全场新品即享10%OFF**













































*This Page:*

*Dress - Chicwear*

*Scarf - Xero*

*Purse - Fabe*

*Shoe - Gucci*

*Tights - Tootie*

*Skirt - Denim*































STYLE CRUZE

Fashion & Beauty Edition

# STYLE CRUZE<sup>TM</sup>

24

March 2022

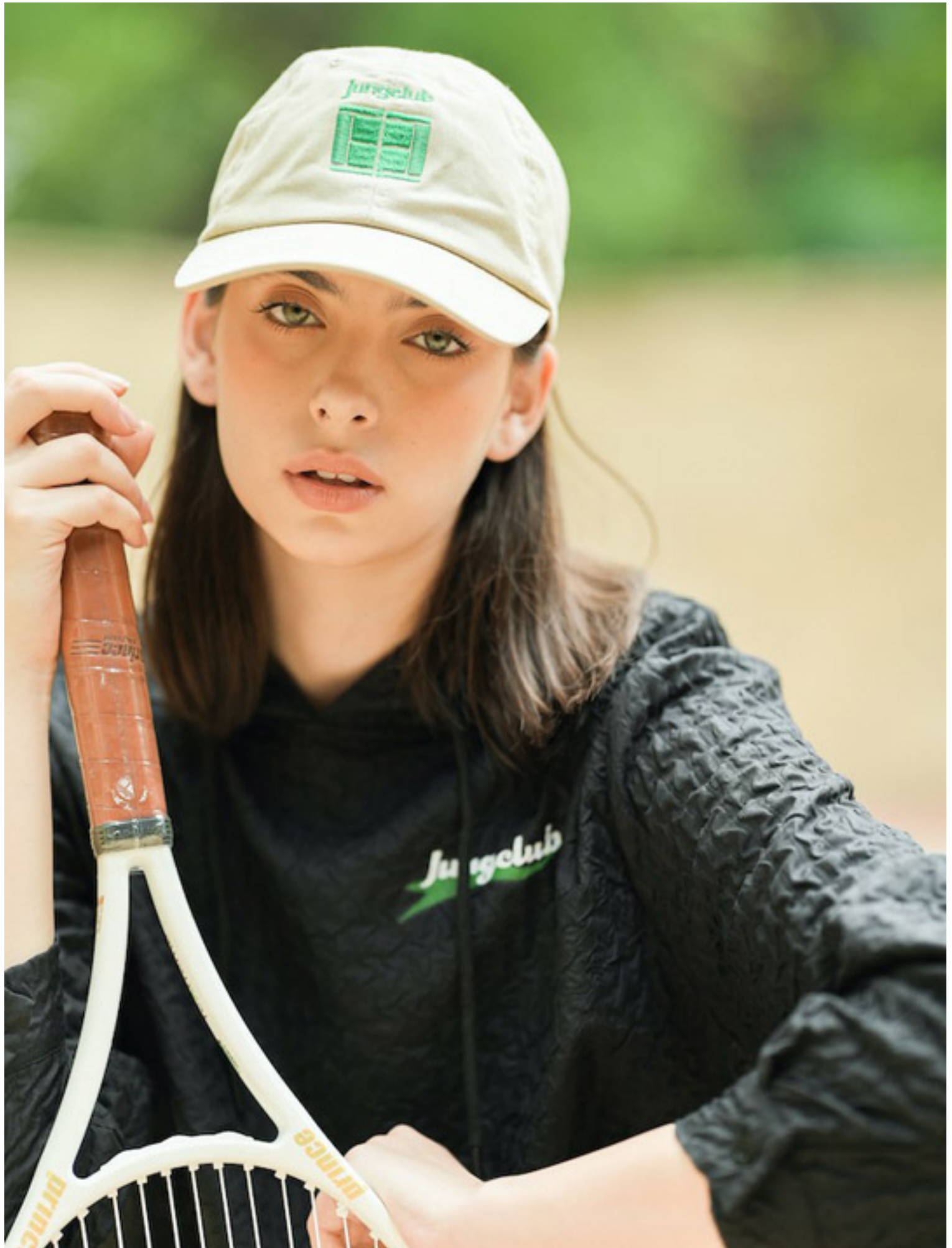
















BAZAAR  
INDONESIA





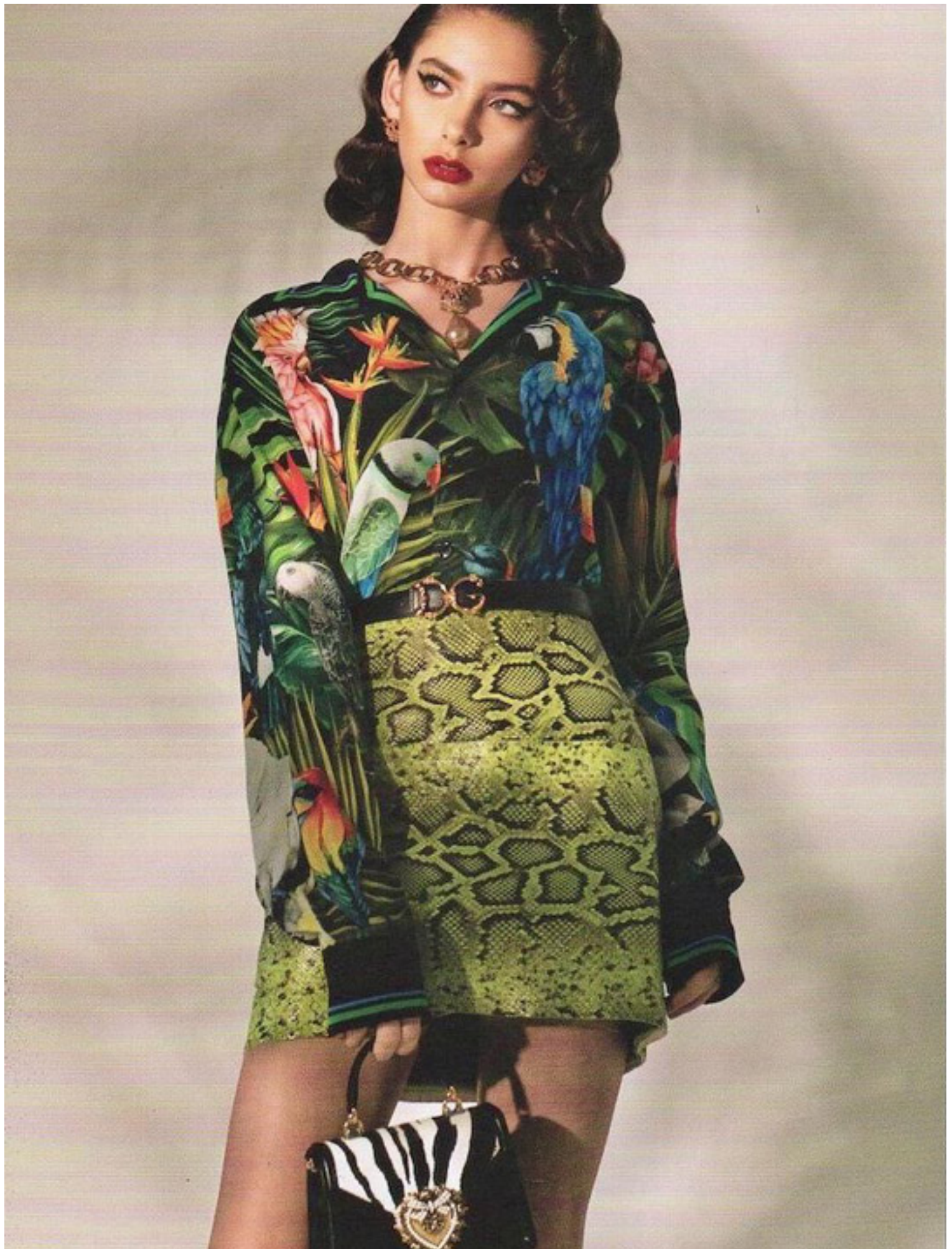
Harpur  
**BAZAAR**  
INDONESIA



BAZAAR  
INDONESIA











DOLCE & GABBANA  
閃石老虎頭耳環・豹紋絲質連身裙・  
鑲石萬眾涼鞋・

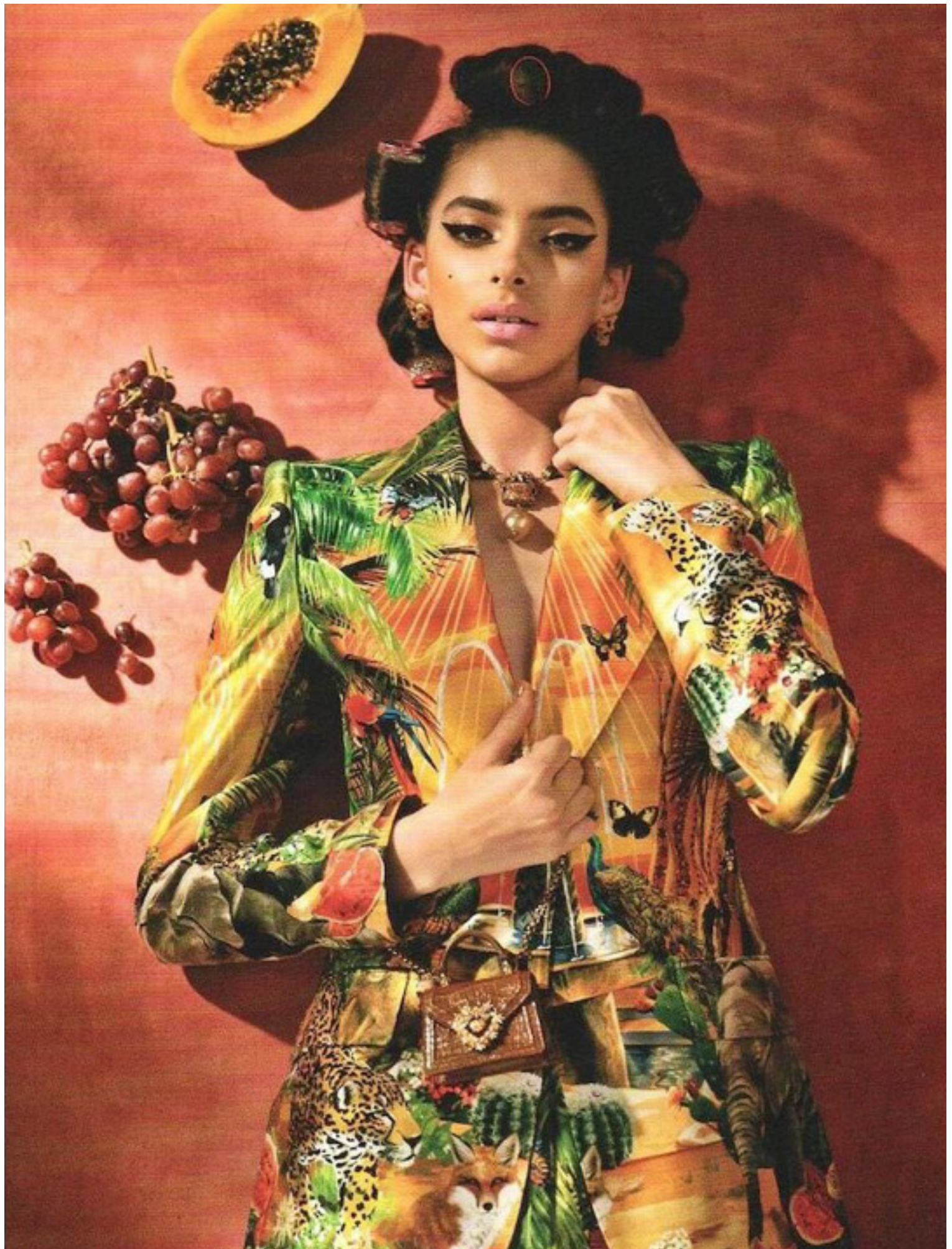
Photographs : Keith Chan  
Art Direction & Styling : Caylin Chan  
Model : Aina@Libera Models  
Hair : Winky Wong@The Atco  
Makeup : Evelyn Ho  
Styling Assistant : Vicky Wan  
Wardrobe : DOLCE & GABBANA  
Spring/Summer 2020 Collection



*This Page:*

*Suit - AntiTi  
Long Vest - Tuma  
Bene  
Shoes - Elche*







A fashion advertisement for Dolce & Gabbana. A woman with dark hair styled in an updo is the central figure. She is wearing a dark, sleeveless dress with a vibrant tropical print featuring green leaves, red flowers, and leopard spots. The dress has a blue underlayer visible at the neckline and a long, flowing white train. She is holding a large pineapple in her right hand and a small circular object in her left. She is wearing large hoop earrings and a ring. The background is a light-colored, draped fabric, and her shadow is cast on the wall behind her.

# ITALIAN

# DREAMS

DOLCE & GABBANA

森林印花連身裙・珠片胸罩・金屬耳環・  
蛇紋高跟涼鞋。





彩色圖案袖衫  
彩色圖案外套  
豹紋太陽眼鏡組合  
吊墜耳環  
All from Dolce & Gabbana





彩色圖案上衣  
Acier, available at Farfetch.com

條紋圖案連身衣

Giorgio Armani

彩色圖案外套

Marni, available at Jeyce

皮革拼布長褲

Peter Do, available at Net-a-porter.com

條紋造型耳環

Fendi

金屬拼珍珠飾項鍊

Dior

水晶飾金屬指環組合

Ambush

羽毛飾鑲嵌

Christian Louboutin

# ARTY FORCE



圖片及鞋子飾格子與視像身裙，彩色圓點連身裙，雙層圓領大襟裙裝，長手套，金屬扣飾圓領城市胸袋，鑲皮厚底高跟鞋，All from Gucci



# elle fashion

彩色圓領連身裙  
Moschino  
仿珍珠鏈飾絨帽  
Laurence & Chico,  
available at Lane Crawford  
漆皮長手套  
Gucci

## 動感色譜

夏至，艷麗色彩為造型多添質感與自信，從利落的輪廓中展現自我風格。

Photo HAKKA YIP; stylist KYLE WU; assistant stylist HELLY WONG; styling assistant LENKA WONG;  
hair KENJI L. at MUSE HAIR; makeup DEEP CHO; model ALINA at LIBERTÉ.



















