

assets

Boy / 1.80 Göğüs / 84 Bel / 64 Kalça / 96 Ayakkabı / 40 Göz / Kahverengi Saç / Koyu Kahverengi



































COTTON:ON











HOMMAGE TO HERB

Photographer: Julius Kwasi Wisdom Adorsu
Model: Arabelle Gregoire
Creative Director: Wilde Creative Productions
Stylist: Getriin Kivi + Mieke Ola
Makeup Artist/Hair Stylist: Nikkila Mann
Videographer: Basile Deschamps
Assistant: Matt Rosengarten



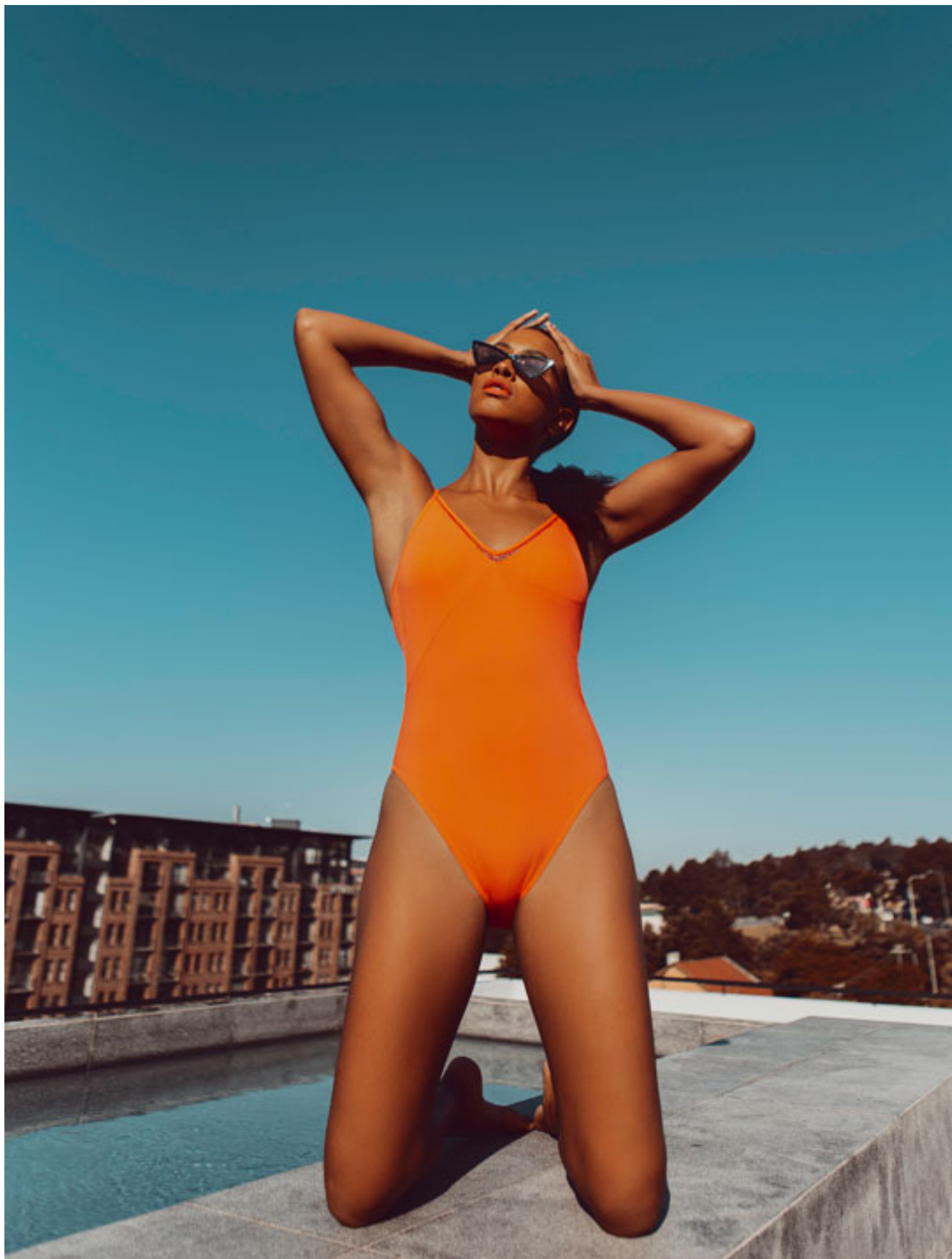




















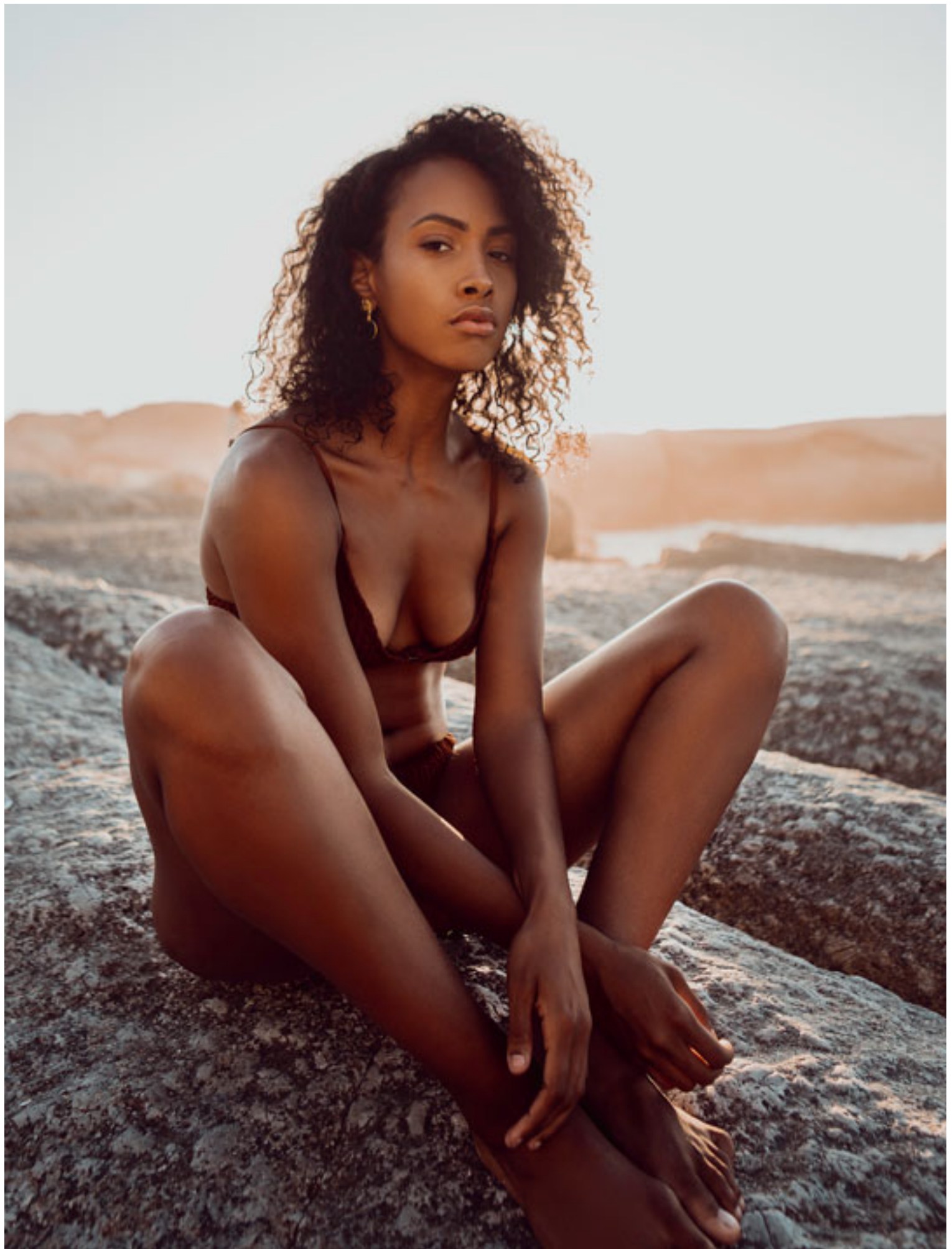












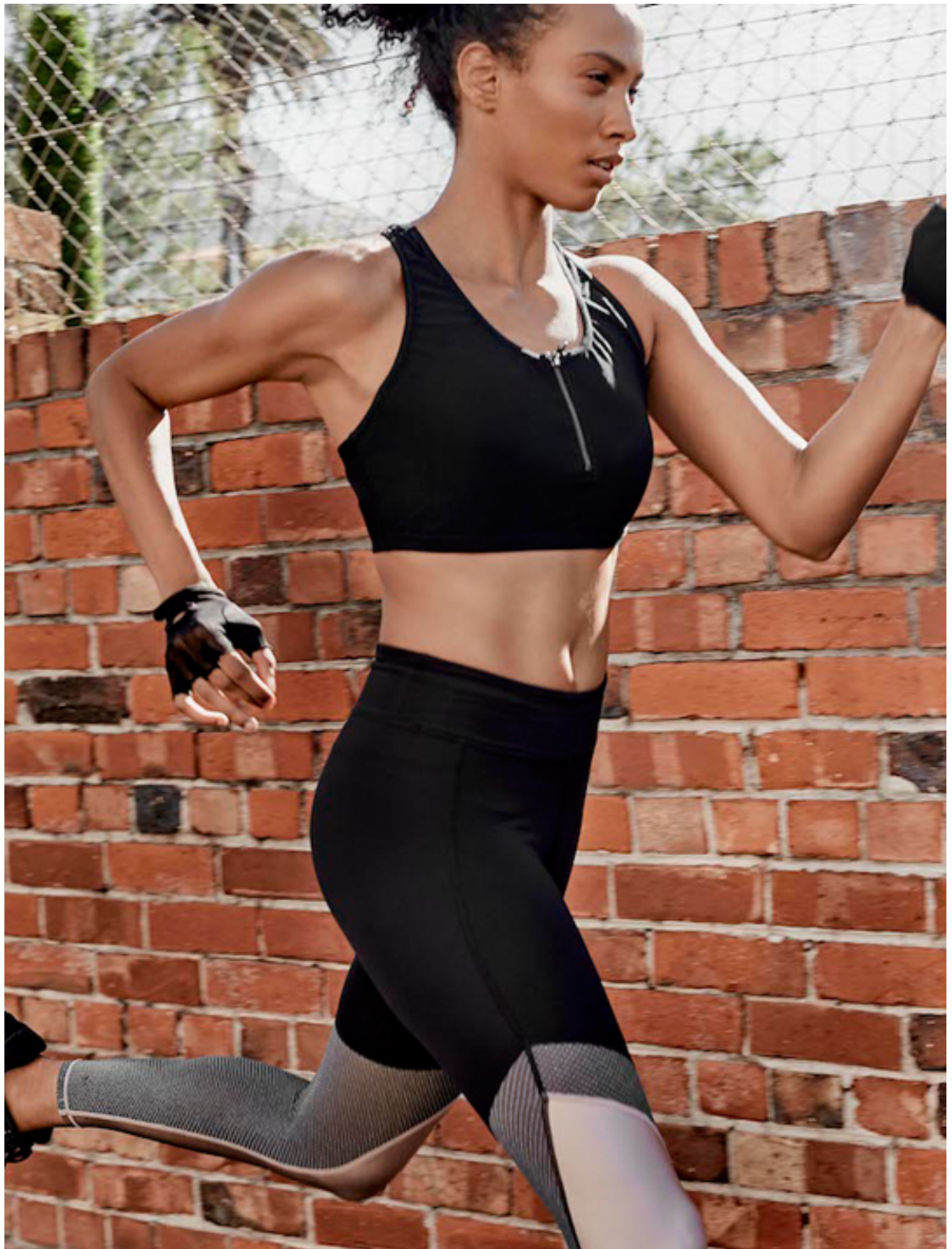







CANADA

photography: Ian Compton (@iantakesfotos)
make-up: Lisa Arsenault (www.pinchcosmetics.com)
wardrobe styling: Tasha Farrington (@prettydeadlystylz)
flowers styling: Lisa Arsenault
retoucher: Iryna Kuchma
model: Arabelle (@arabellenicole and @morganmodelmgmt)









Photographer, .
*Model, **ARABE**.*
*Agency, **MORGA**.*
*Stylist, **ARAM**.*
Make up Artist,

Top, White and Black
Bottom, Black with
Shoes, Bright Pink .
Accessory, Fuchsia .















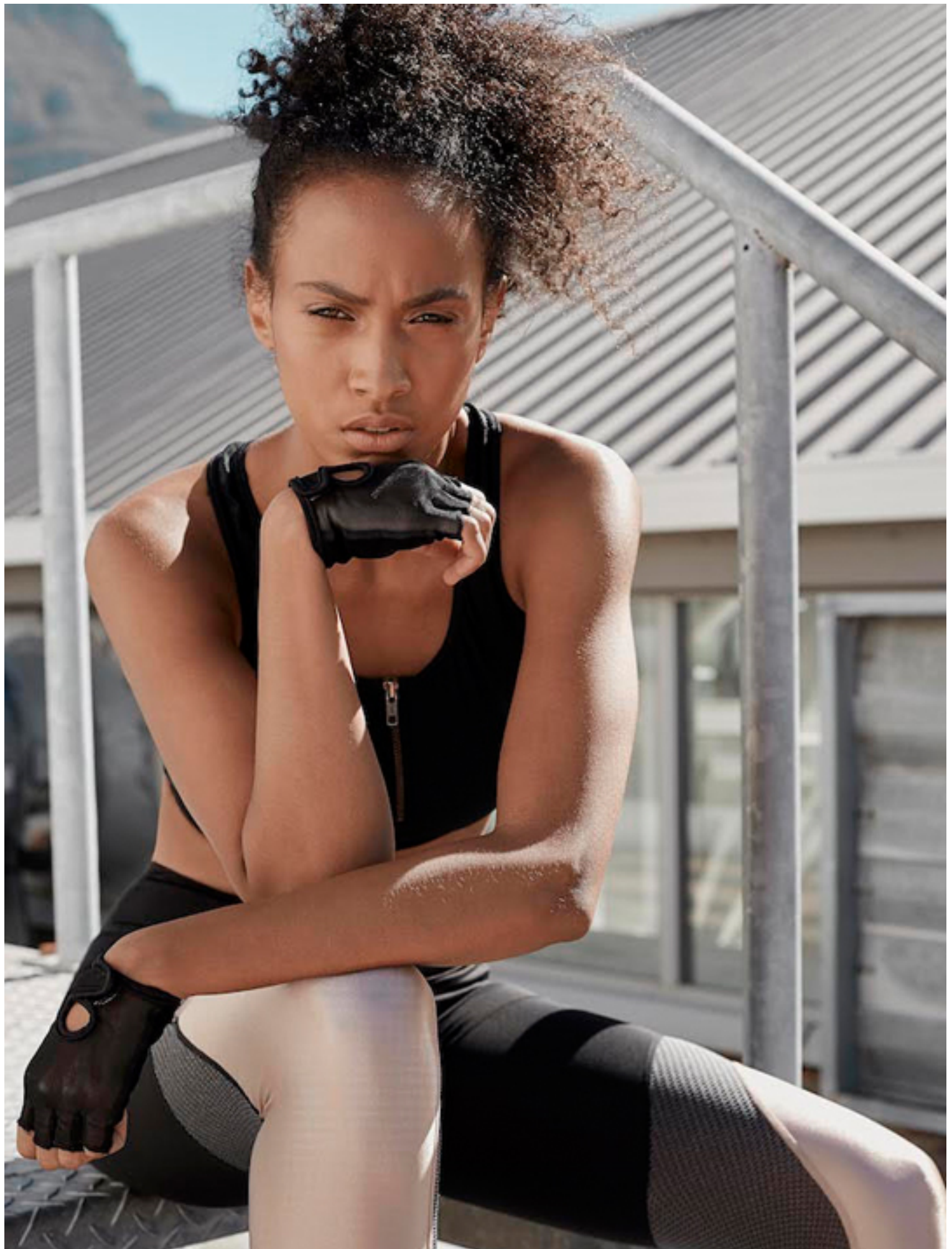


OUT
OF SIGHT
OUT OF
MIND









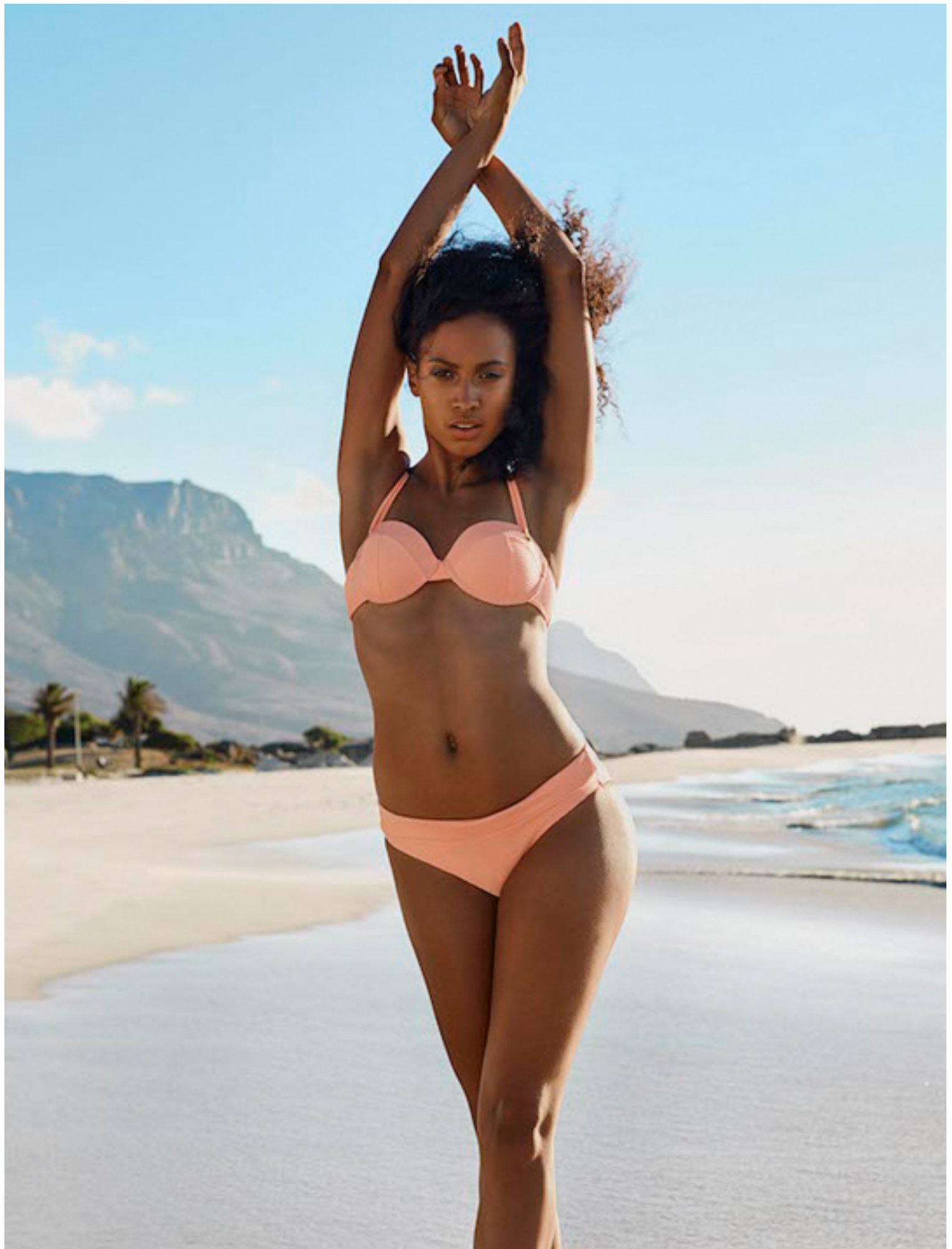
























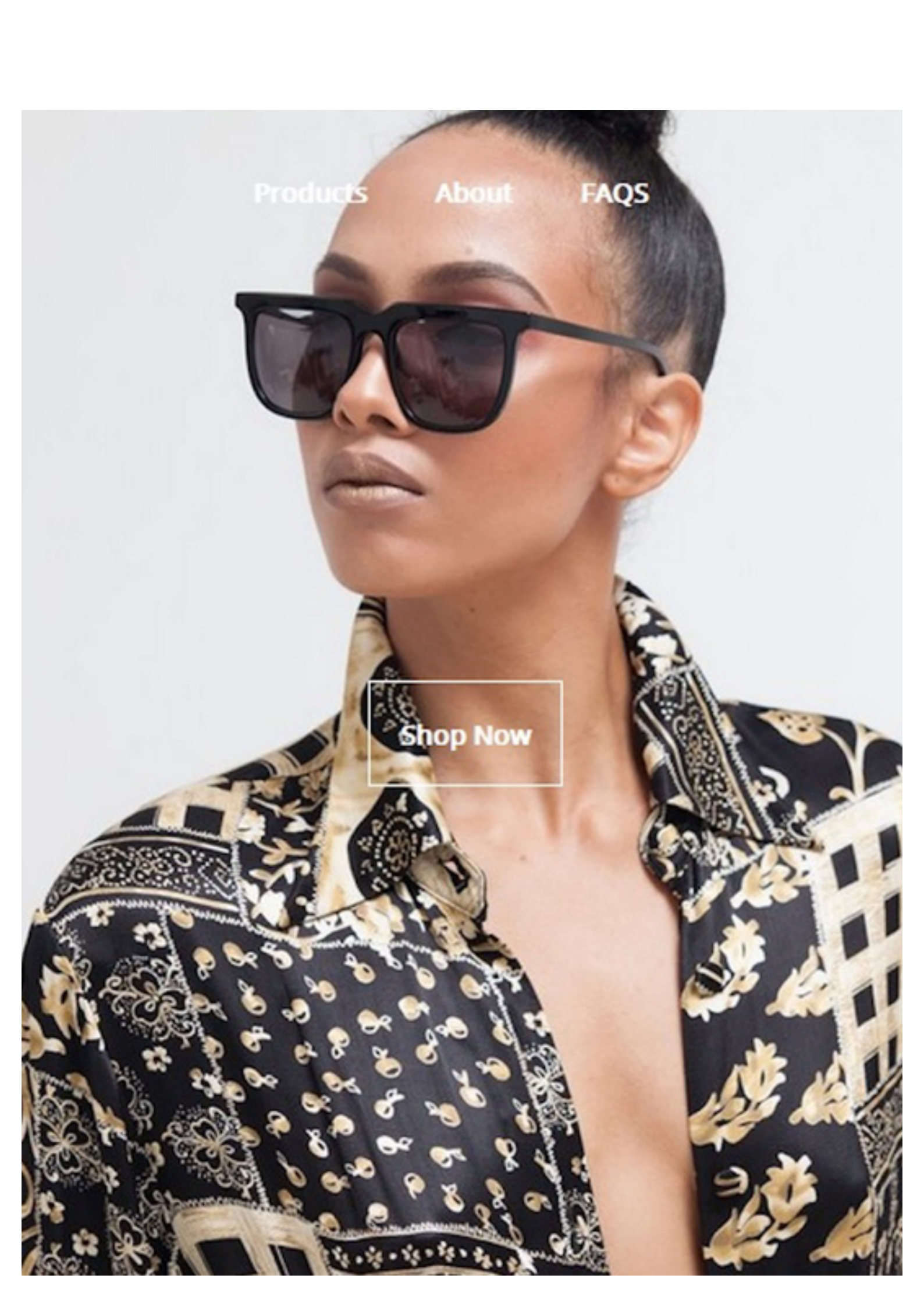










A close-up portrait of a woman with dark hair pulled back, wearing large black sunglasses and a black shirt with a gold and white pattern. The background is a plain, light color.

[Products](#)

[About](#)

[FAQS](#)

[Shop Now](#)



















