

Arabelle-Nicole

Boy / 1.80 Göğüs / 84 Bel / 64 Kalça / 96 Ayakkabı / 40 Göz / Kahverengi Saç / Koyu Kahverengi





































COTTON:ON













HOMMAGE TO HERB

Photographer: Julius Kwasi Wisdom Adorsu
Model: Arabelle Gregoire
Creative Director: Wilde Creative Productions
Stylist: Getriin Kivi + Mieke Ola
Makeup Artist/Hair Stylist: Nikkila Mann
Videographer: Basile Deschamps
Assistant: Matt Rosengarten



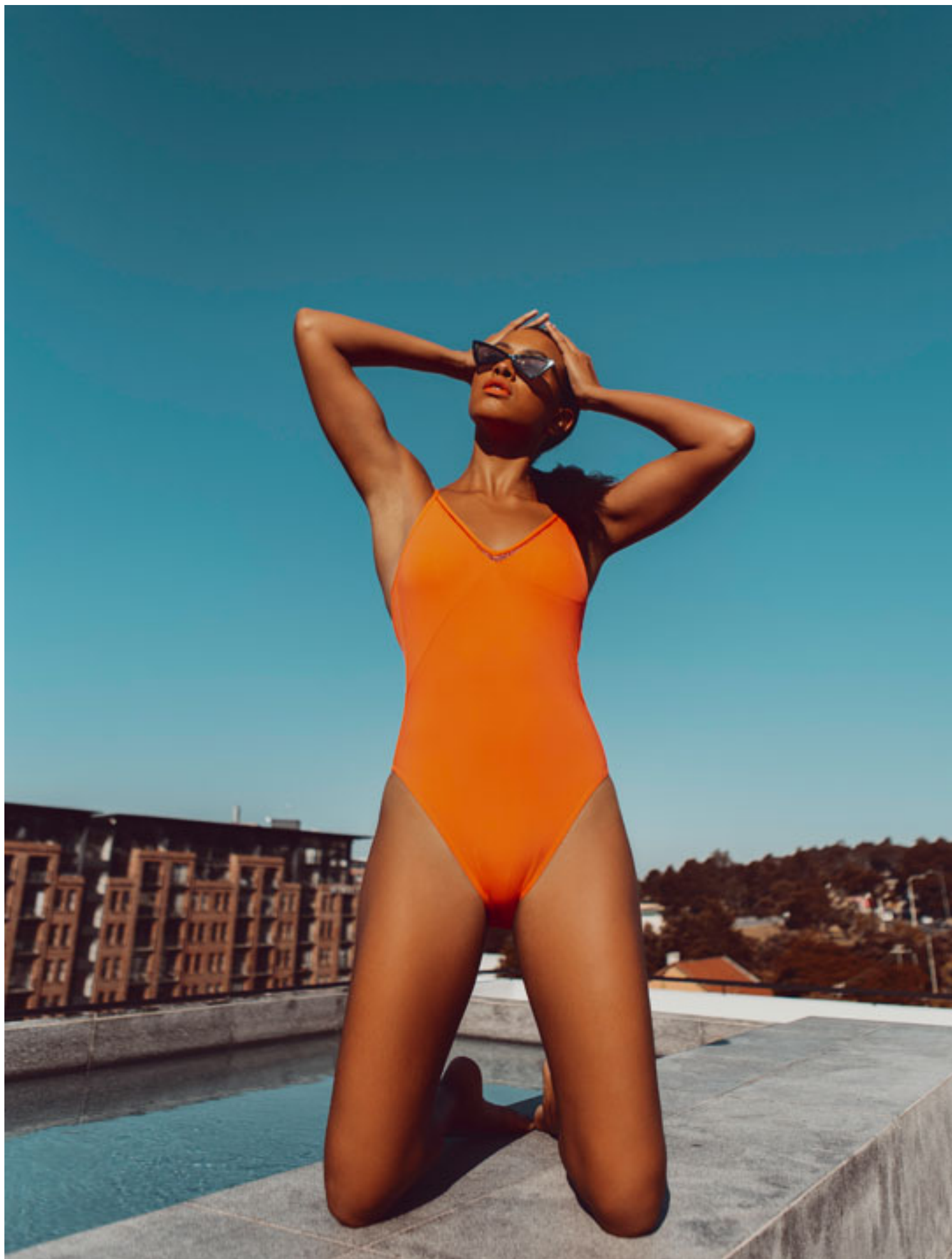


















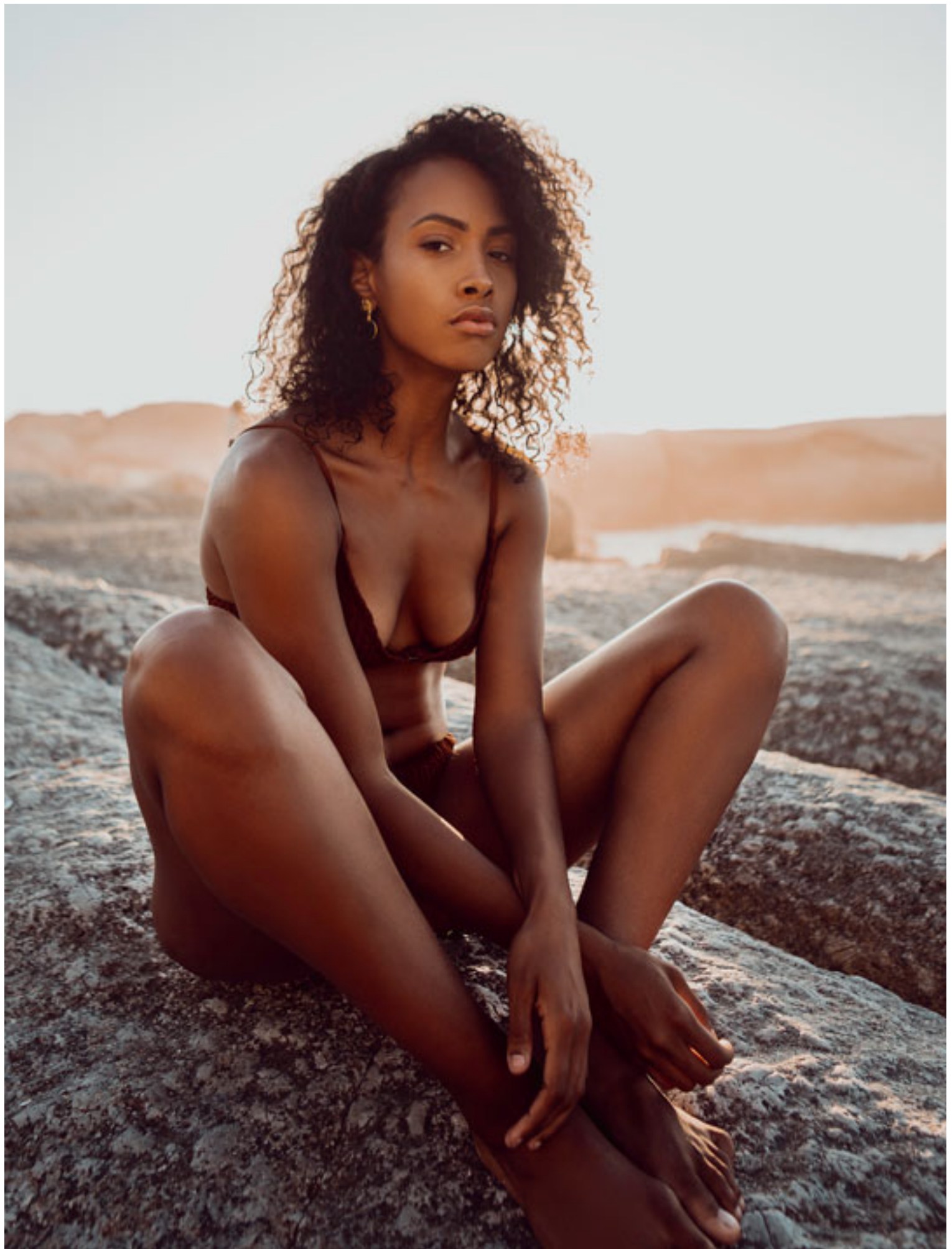














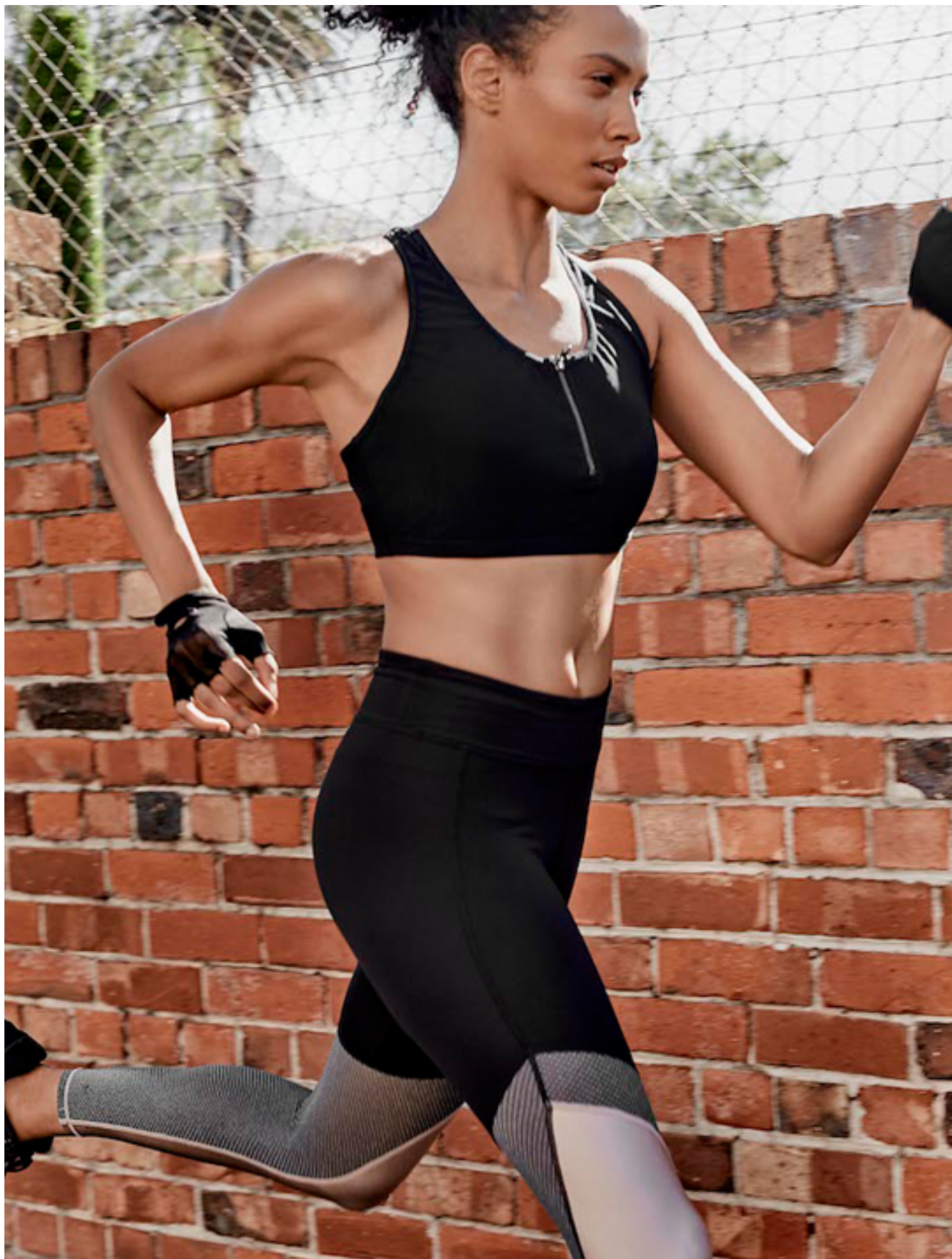
CANADA

photography: Ian Compton (@iantakesfotos)
make-up: Lisa Arsenault (www.pinchcosmetics.com)
wardrobe styling: Tasha Farrington (@prettydeadlystylz)
flowers styling: Lisa Arsenault
retoucher: Iryna Kuchma
model: Arabelle (@arabellenicole and @morganmodelmgmt)















Photographer,
*Model, **ARABE***
*Agency, **MORGA***
*Stylist, **ARAM***
Make up Artist,

Top, White and Black
Bottom, Black with
Shoes, Bright Pink
Accessory, Fuchsia













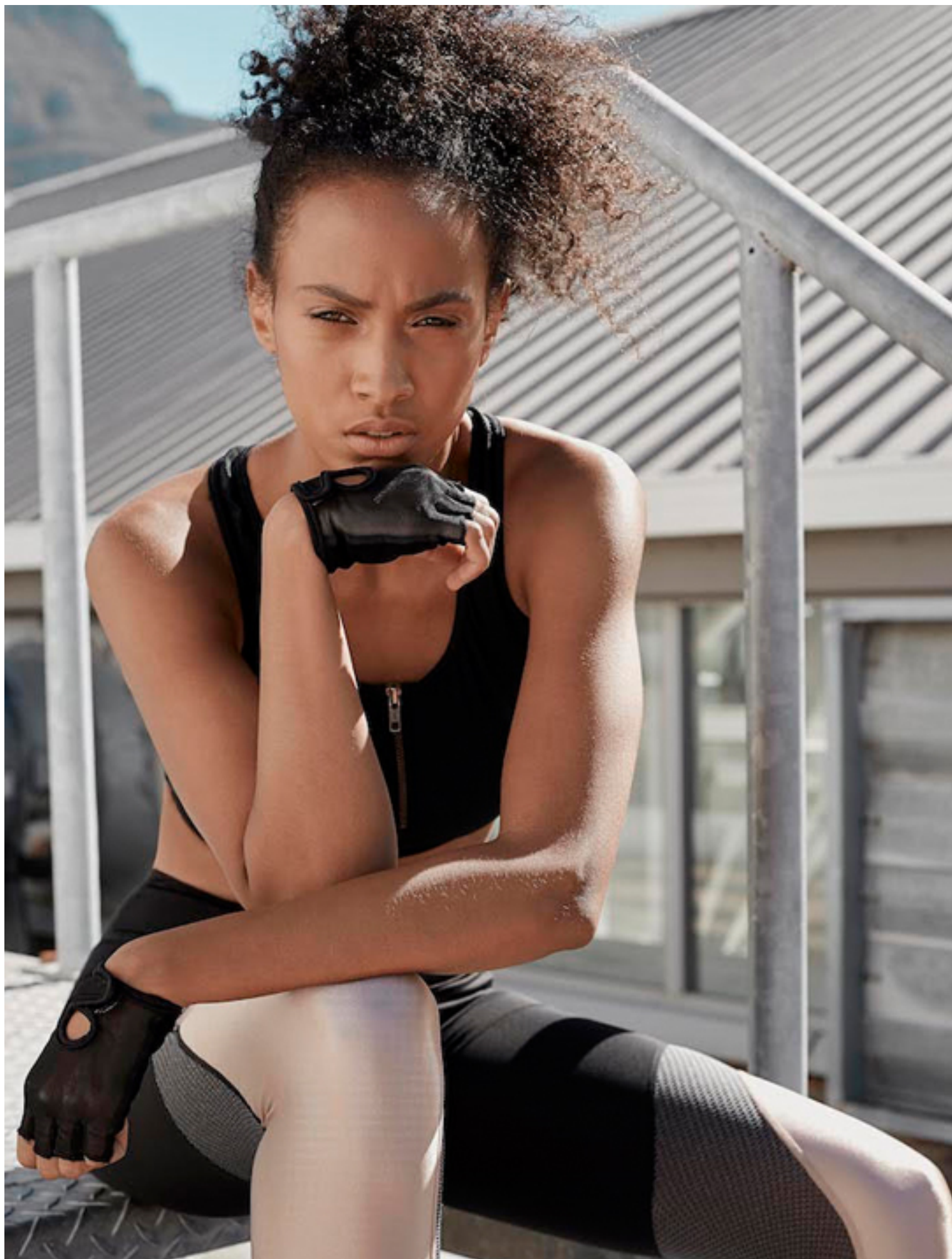


OUT
OF SIGHT
OUT OF
MIND











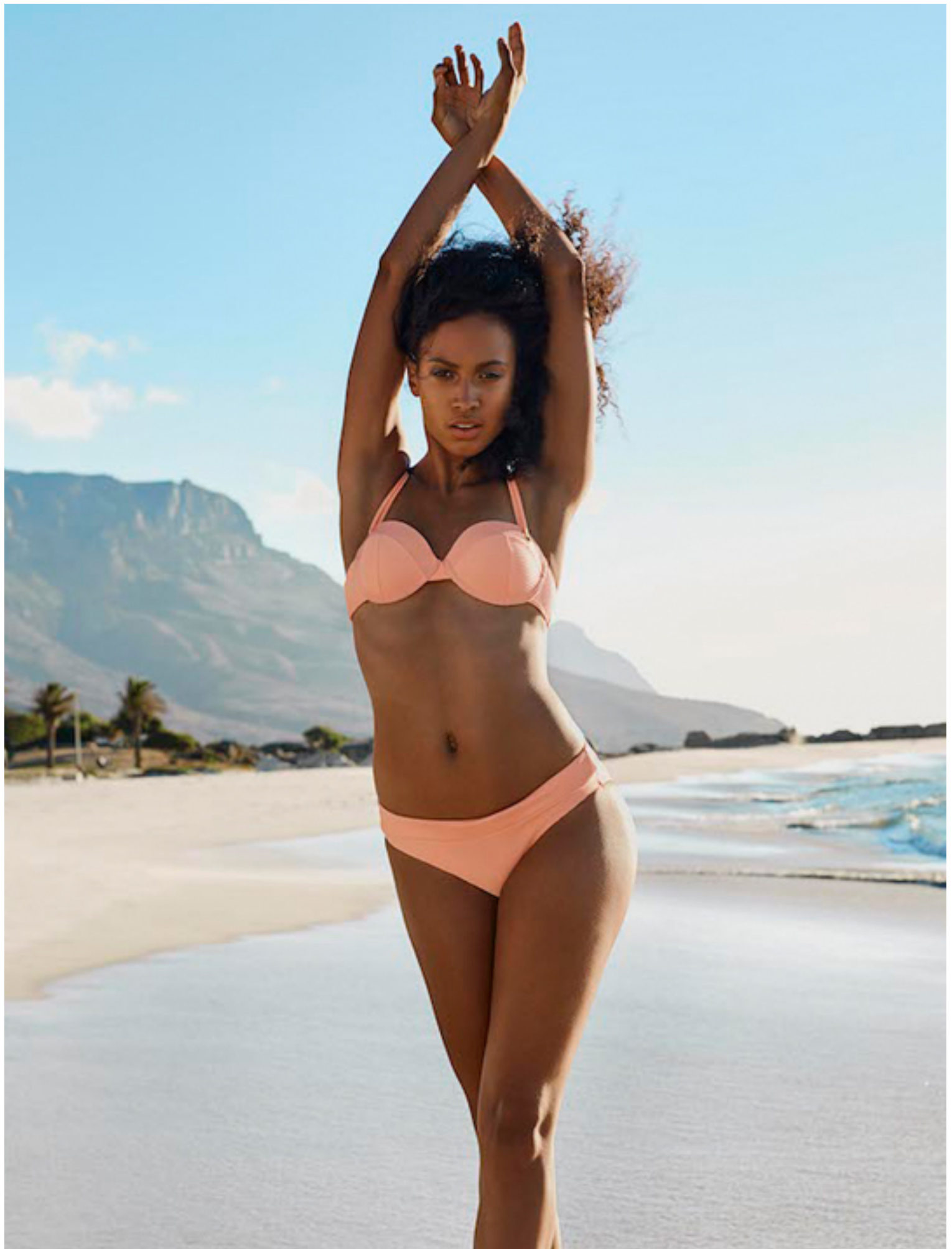














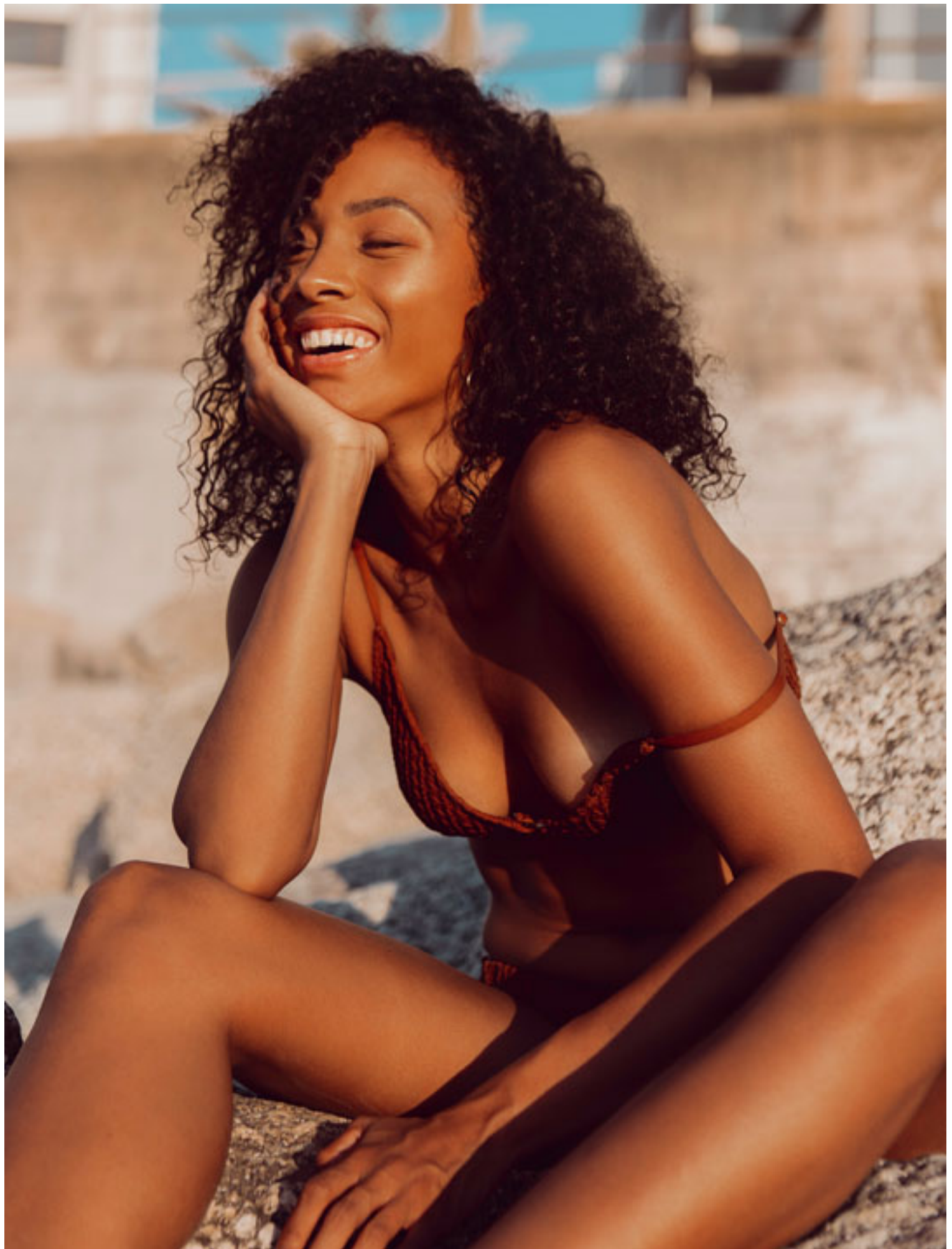








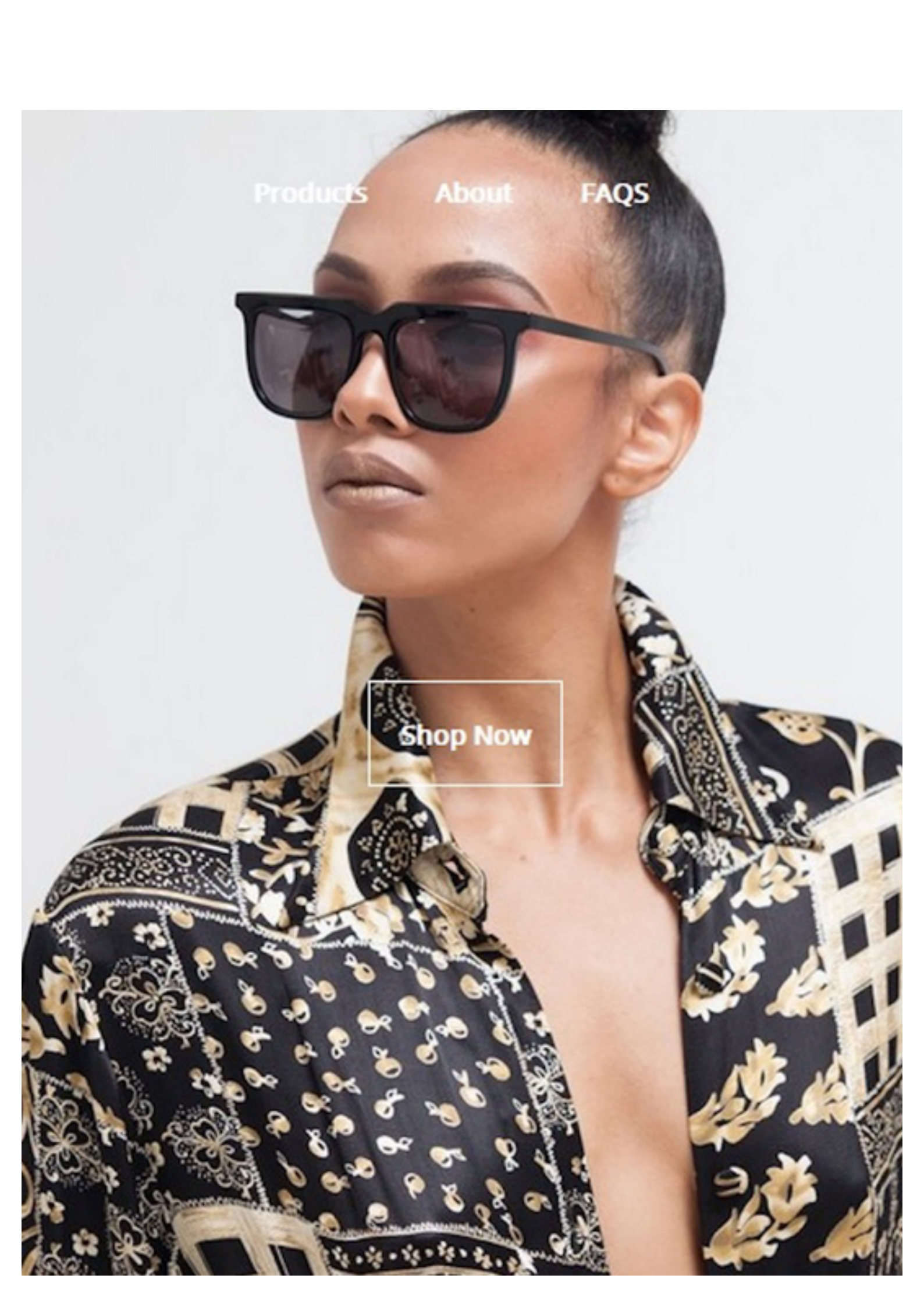










A close-up portrait of a woman with dark hair pulled back, wearing large, dark sunglasses. She is looking slightly to the left. She is wearing a black shirt with a complex, repeating pattern of gold and white floral and geometric motifs. The background is a plain, light gray.

[Products](#)

[About](#)

[FAQS](#)

[Shop Now](#)

















